

# International Meeting of Sedimentology 2017

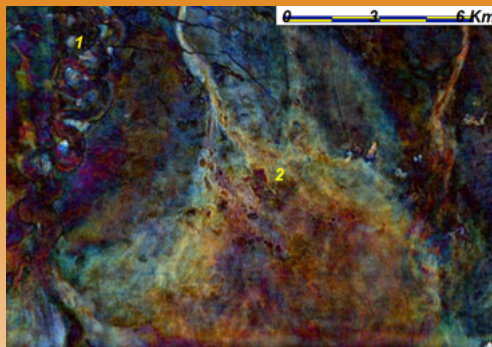
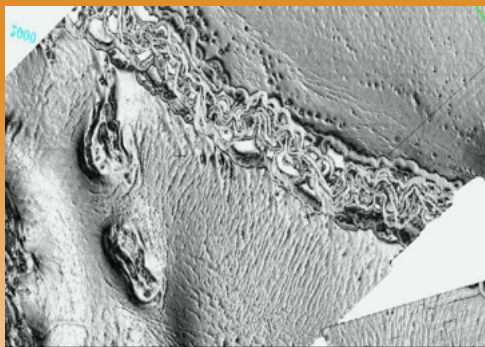
33<sup>rd</sup> IAS & 16<sup>th</sup> ASF Joint Meeting



## 2D/3D Seismic Geomorphology Workshop Course applied to Siliciclastic Depositional Systems

Jean-Loup Rubino, *Total Sedimentologist, CSTJF, Pau France*

Jacqueline Camy-Peyret, *Geophysicist, Total Associated Professor, Pau, France*



[ims2017.sciencesconf.org](http://ims2017.sciencesconf.org)

Since 20 years, improvement of 3D seismic acquisition, processing and visualisation have strongly modified our view of buried sedimentary systems. More specifically, 3D seismic amplitude maps can be use like seabreams on present day ocean and allow for analyzing past seascapes or like subaerial landscapes with satellite images. It is of primary importance for geoscientists to have the basic background on the new Seismic Geomorphology techniques and have images of the most common sedimentary environments.

Seismic Geomorphology can also be applied to carbonates or structural analysis, however this two-days-workshop will focus on Siliciclastic Depositional Systems. We will review depositionnal environments from aeolian, fluvial, delta to deep water by comparing 3D attribute maps and modern systems views from satellite. Individual setting will be approached by progressive downsizing from large scale such as deep sea fan down to the individual elements, such as canyons, channels, lobes and MTC for example.

The course will also include practical applications and demos on an in-house workstation developed by Total. Attendees will be welcome to share ideas and results during a one hour slot organised daily for short presentations.

***Maximum attending: 26 persons***  
***Registration Fee: 220 euros (50% off for students) including lunch, coffees break and a DVD of the workshop content.***

